

# KUMORI-CON 2024

## Extremely Hard Take- Home Anime Quiz

October 3, 2024

NAME \_\_\_\_\_

If you win, would you like your result to be announced at closing ceremonies? YES \_\_\_\_\_ NO \_\_\_\_\_

Name to be announced \_\_\_\_\_

## RULES

1. You may begin as soon as you receive the quiz.
2. You must turn this quiz in to the panelist before or between 10:00 am and noon on Saturday, November 9, 2024 in the Programming Office.
3. You must print your real name and on your entry.
4. Mailed entries must be received by Sunday, October 27, 2024 at:  
Extremely Hard Anime Quiz  
P.O. Box 78690  
Seattle, WA 98178-0690
5. This quiz consists of fifty multiple-choice questions.
6. All questions have only one correct answer.
7. Some questions may have no answers that are precisely correct in which case you are to circle the best (most correct) answer.
8. This quiz is open book and open notes. Participants may use any resources to answer the questions, including each other.
9. Unless otherwise noted in the question, if there is a difference between the English dubbed version and the subtitled version, the subtitled version shall prevail.
10. Selected answers must be circled. Xs, obliterations and overstrikes will be considered answers that the participant has rejected.
11. You are encouraged to show your thought process, such as by crossing out wrong answers and writing why you think your answer is correct. This can help you convince the panelist that you are correct should we find some unclear element in the question.
12. Answers must be in black. Markings of any other color may disqualify your entry.
13. There will be panel from 10:00 am to 11:00 am on Friday, November 8, 2024, in Panel 5, where people can ask questions about the quiz. This panel will not provide answers to the questions on the quiz. If you are feeling confident, you may skip this session or turn in your quiz at this time.
14. There will be a panel from 9:00 am to 11:00 am on Sunday November 10, 2024, in Workshop 1 to discuss answers and if possible, announce the winners.
15. If no clear winner is found by the time of the panel on Sunday November 10, 2024, the panel will begin with a tiebreaker session and continue as such until a winner is found.
16. You must be present on Sunday's panel to win.
17. In the event of several scores being tied, the test received earliest will be considered the highest score among the group of equal scores.
18. The panelist will evaluate all answers for correctness.
19. The word of the panelist is final in determining the correctness of all answers.
20. The panelist reserves the right to add, delete or modify the rules, as finds necessary.
21. Ichiban Con staffs that have seen the questions prior to September 27, 2024 and relatives of the panelist are not eligible for prizes.
22. You may use any source of information to arrive at your answer but you are responsible for understanding your answer. Should you answer correctly, you may be called upon to explain your reasoning to everyone at the panel (see Rule 11).

1. The painting that Father Trancy soils with his wine goblet in Episode 8 of *Black Butler Season 2* implies his orientation. This is based on a(an) \_\_\_\_\_ interpretation of the subject.
  - a. American
  - b. British
  - c. Hungarian
  - c. Italian
  - e. Japanese
  
2. During the toast in Episode 14 of *Le Chevalier D'Eon*, the subject of the painting behind the clinking glasses is \_\_\_\_\_. (Hint: consider what happened at the end of the Episode 12).
  - a. an anachronism
  - b. a personal acquaintance of the owner of the art
  - c. a well know character from popular fiction of that time
  - d. a historical character from five to one hundred years in the past
  - e. a biblical or mythological character clad in contemporary attire
  
3. When Kuroha Diana Shiratori inquires if any of the auditioning models had watched the Diet broadcast in Episode 5 of *Eden of the East*, what is the purpose of the painting to the left side of the screen, above the right shoulder of the brown hair man?
  - a. It generally implies her values.
  - b. It is intended to make her appear urbane.
  - c. It implies that she has a similar personality to one of the depicted characters.
  - d. It shows how she views the aspiring models.
  - e. All of the above are true.
  
4. Which of the following terms best describe the Legislature Building from which Sheska views the earthquake damage to the capital of Amestris in *Fullmetal Alchemist, Conqueror of Shamballa*?
  - a. art deco
  - b. baroque
  - c. neo-classical
  - d. Romanesque
  - e. romantic revivalist
  
5. Moriko Morioka has a dream in Episode 2 of *Recovery of an MMO Junkie* in which faceless workers go to work for a company where traditional Westerners consider the corporate leaders to be \_\_\_\_\_.
  - a. arrogant
  - b. cruel
  - c. greedy
  - d. lazy
  - e. stupid

6. Consider the costumes of the following character costumes: (A) Nei Feng Yi as depicted on the poster of Episode 17 of *Michiko & Hatchin*, (B) Deshiko Dehsi's monster form in Episode 13 of *Rosario + Vampire*, and (C) Shurei Hong from Episode 1 of *Story of Saiunkoku*. In what chronological order were they in fashion?
- a. ABC
  - b. ACB
  - c. CAB
  - d. CBA
  - e. It begins with B
7. When Sakura Domyoji has kanji painted on her fingernails in Episode 10 of *Chronicles of the Going Home Club*, the text should be \_\_\_\_\_.  
a. an aphorism of abandoning the ego self and becoming one with the universe  
b. a system of values for running a society in a moral and ethical manner  
c. a philosophy that the best ruler is neither kind nor harsh but barely detectable  
d. Ming dynasty stories about ghosts and monsters  
e. mostly anecdotes dealing with the ambiguity between dreams and reality
8. Had the mother of Plague and Terror from Episode 79 of *Dragon Ball* appeared, she probably would have had the characteristics of or borne the nickname of a \_\_\_\_\_.  
a. bunny- b. cow
- c. dog
- c. tigress
- e. vixen

9. The chicken like bird in the opening of *Koihime Musou* emphasizes the \_\_\_\_\_ theme of the series.  
a. comedic- b. feminine
- c. martial
- d. virtuous
- e. none of the above

10. After discussing strategy with the commanders of the Amaterasu in Episode 7 of *Starship Operators*, Captain Wong of the *Shenlong* then discusses the situation with his executive officer in the officers' lounge. What is written on the plaque behind them?  
a. nonsense- b. melancholic, ancient Chinese poetry
- c. sacred prayers to the gods of war, luck and mercy
- d. emergency ship operating procedures
- e. patriotic slogans exhorting the crew to courage and steadfastness in battle

11. When Aleksandra Ivanovna Pokryshkin looked out the window from her grandmother's apartment in Episode 6 of *Brave Witches*, she looked \_\_\_\_\_.  
a. east  
b. north  
c. west  
d. south  
e. It cannot be determined.
12. After her school had been closed in *Girls und Panzer der Film*, Miho Nishizumi returns home on board a ferry that was designed and built in \_\_\_\_\_.  
a. Great Britain  
b. France  
c. Germany  
d. Italy  
e. Japan
13. Which of the following locations from *Kantai Collection* is closest to the prime meridian?  
a. Episode 3, where Kisaragi is sunk  
b. Episode 4, where Kongou, Haruna, Fubuki and others battle the abyssal fleet  
c. Episode 8, where we meet Yamato  
d. Episode 9, at the bomb-damaged base  
e. Episode 11, where the protagonists meet the Airfield Princess
14. In the latter half of Episode 4 of *Yuri on Ice*, the Nishikori triplets explain the Figure Skating Grand Prix series. For Skate America, they drew a view of Chicago with the observer facing \_\_\_\_\_.  
a. east  
b. south  
c. west  
d. north  
e. The view is idealized; none of the above can reasonably be determined.
15. From the Ogasawara Islands in Episode 5 of *Zipang*, the Japanese Defense Ship *Mirai* sailed to the Anambas Islands in Episode 7. If it took the shortest path, it would most likely pass through the \_\_\_\_\_.  
a. Bismark Archipelago  
b. Formosa Strait  
c. Ironbottom Sound  
d. Makassar Strait  
e. Palawan Passage

16. In Episodes 1 and 2 of *Axis Powers Hetalia*, Germany finds Italy in a tomato crate near \_\_\_\_\_.

- a. Bolzano
- b. Trento
- c. Trieste
- d. Udine
- e. Venice

17. The ending credits of *Le Chevalier D'Eon* features a montage of the characters. Of these, five are based on historical characters. Which of these is based on a composite of four historical characters?

- a. D'Eon de Beaumont
- b. Louis XV
- c. Marquise de Pompadour
- d. Marie Leszczynska
- e. Philippe D'Orleans

18. In Episode 13 of *Ghost in the Shell*, Eka Tokura and her group were inspired by terrorists that violently promoted \_\_\_\_\_.

- a. anti-Semitism and pseudo-scientific racism
- b. feminist, anti-racist ideas
- c. Maoist and communist social and economic policies
- d. strict interpretation of Sharia or Islamic law
- e. genocide in the name of profit

19. In Episode 13 of *School Rumble, Second Semester*, Kazuya Tanaka and Toki Nagayama were talking about a time in Rome where Christianity was \_\_\_\_\_.

- a. not yet a religion because it occurred at a time before Christ
- b. persecuted
- c. criminal but not persecuted in basically a don't ask don't tell policy
- d. the official religion of the empire
- e. split between the western church and the eastern church

20. Admiral Yamamoto regrets the loss of Captain Kaku in Episode 4 of *Zipang*. What was the ship Lt. Commander Takumi Kusaka left supposed to do for Captain Kaku's vessel?

- a. defend it against submarines
- b. defend it against surface threats
- c. provides it with a combat air patrol
- d. supply it with fuel
- e. none of the above

21. When Osokabe Makie tells *Haruna* that she is, "nice and warm," in Episode 5 of *Arpeggio of Blue Steel*, the red plush toy clad in a tiger print garment and seated on a tuffet was made to resemble a(an) \_\_\_\_\_.  
a. Buddhist divinity  
b. devil or demon  
c. Shinto god  
d. legendary musician  
e. oni
22. In Episode 2 of *Baka and Test*, the question was asked, "Who did Nobunaga Oda join hands with in the Battle of Nagashino?" The answer is, of course, Ieyasu Tokugawa, but what happened?  
a. Their forces defeated daimyo allied with the Takeda clan.  
b. They were defeated by the Takeda clan.  
c. The Takeda clan conquered their castle but the Takeda lord was mortally wounded.  
d. They decisively defeated the Takeda, killing many of the Takeda's best generals.  
e. They eliminated the Takeda clan; the Takeda lord committed seppuku.
23. Which of the following characters is most likely to have often impersonated a Japanese teenage girl?  
a. Miria Harvent of *Baccano*  
b. Rosette Christopher of *Chrono Crusade*  
c. Faye Valentine of *Cowboy Bebop*  
d. Eva Friedel of *Magnetic Rose* (from *Memories*)  
e. Maka Albarn of *Soul Eater*
24. In the prologue of Episode 2 of *Muromi-san*, the title character recalls singing for Chinese people from the \_\_\_\_\_ Dynasty.  
a. Song (960 – 1279)  
b. Yuan (1271 – 1368)  
c. Ming (1368 – 1644)  
d. Qing (1644 – 1911)  
e. Wait, Muromi-san did not recall singing for Chinese people.
25. In Episode 33 of *Rurouni Kenshin*, the title character decides to go to Kyoto on a journey that should take him through \_\_\_\_\_.  
a. Nagano  
b. Nagoya  
c. Niigata  
d. Nishinomiya  
e. none of the above

26. The premise of the Type Moon Fate universe revolves around legendary warriors, summoned by mages and compelled to secure the Holy Grail by command spells. The first work to inspire Kinoko Nasu to create this universe probably came from \_\_\_\_\_. (Hints can be found in Episode 15 of *Fate, Unlimited Blade Works* and especially Episode 10 of *Fate Zero*.)

- a. French literature
- b. German poetry
- c. Greek mythology
- d. Italian opera
- e. Japanese folk tales

27. In Episode 13 of *Kill la Kill*, Sukuyo Mankanshoku makes croquettes with mystery meat. Her creation seems to be inspired by \_\_\_\_\_ literature.

- a. French
- b. German
- c. Indian
- d. Japanese
- e. Scottish

28. In Episode 19 of *Ouran High School Host Club*, the Zuka Club performs a Takarazuka version of a famous story. If the setting is the same, what famous statue does Lord Frederick see when he dies?

- a. the one first filmed by Kyosuke Tsutsumi in Episode 1 of *Ef, A Tale of Memories*
- b. the winged statue in Episode 3 of *Emma, A Victorian Romance*
- c. the statue that the little girl talks to in Episode 18 of *Ghost in the Shell, 2<sup>nd</sup> Gig*
- d. the statue by Negi after he reveals his magic to Konoka in Episode 5 of *Negima!?*
- e. the winged one in the first ending of *Sword Art Online*

29. While the title characters make their vows to each other in the prologue of Episode 12 of *Romeo X Juliet*, the lyrics of the background music expresses \_\_\_\_\_.

- a. the holiness of their union
- b. the sublime beauty of their matrimonial setting
- c. their devotion to each other in the face of adversity
- d. their yearning to be free
- e. literally, "leave the thorns, seize the rose"

30. Episode 12 of *Stellvia* is the Christmas episode. At the end, Najima Gable quotes a Bible verse that is most associated with the \_\_\_\_\_.

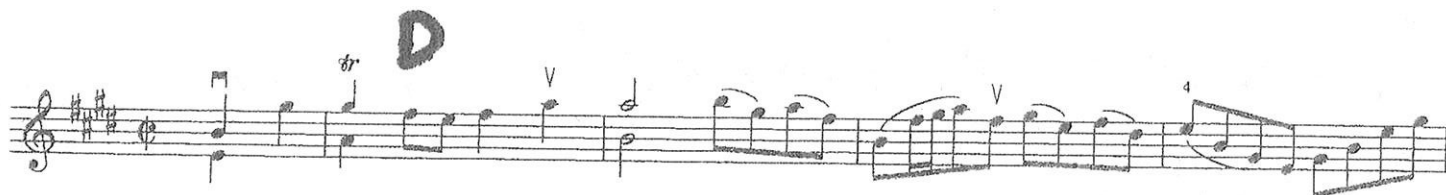
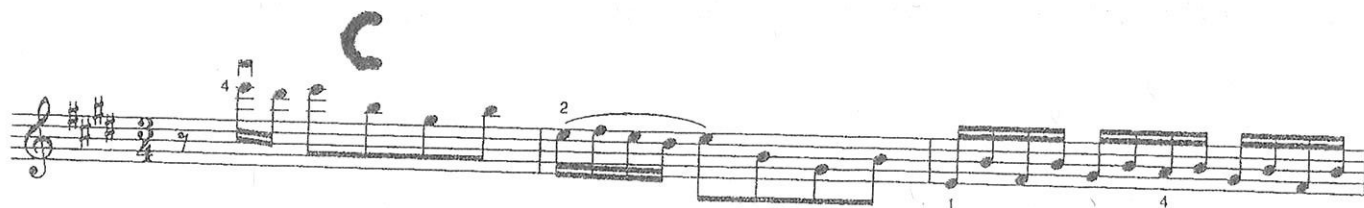
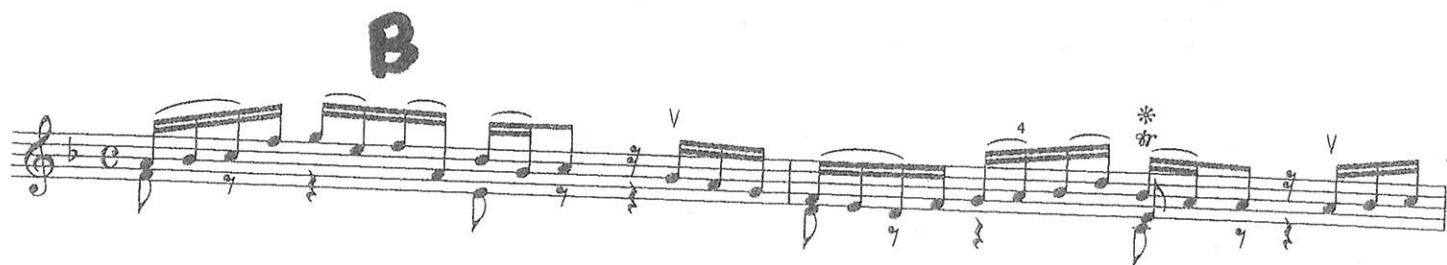
- a. annunciation
- b. visitation
- c. adoration of the shepherds
- d. adoration of the magi
- e. flight into Egypt

31. In Episode 6 of *Big-O*, Mr. Gieseng has Intro finish a megadeus named Constanze. Had he also worked on an even more powerful version of Constanze, what would be its most appropriate name?
- a. Aloysia
  - b. Caterina
  - c. Dorotea
  - d. Josepha
  - e. Sophie
32. Which of the scores on Page 13 is of music not contained in the CD that Shuichi Kuze gave to Mizuki Hayama in Episode 1 of *Ef, A Tale of Melodies*?
- a. A
  - b. B
  - c. C
  - d. D
  - e. E
33. In Episode 7 of *Lucky Star*, Tsukasa Hiiragi's ring tone is Pachelbel's Canon in D beginning most nearly at bar \_\_\_\_\_.
- a. 7
  - b. 11
  - c. 13
  - d. 16
  - e. 19
34. In the weekend after Kumoricon 2024, the Portland Baroque Orchestra will perform music similar to that which inspired Yoshihisa Hirano to compose his \_\_\_\_\_ from *Ouran High School Host Club*.
- a. Concerto
  - b. Intermezzo
  - c. Music for the Music Salon
  - d. Powerful Motor Rhapsody
  - e. Tango Brillante
35. When we first meet Duck in Episode 1 of *Princess Tutu*, she is in a pond. The background music begins with pizzicato strings in the middle and lower registers but soon a higher pitched instrument takes over the melody. How is that instrument played?
- a. on a keyboard which causes strings to vibrate
  - b. on a keyboard which causes metal plates to vibrate
  - c. with sticks which causes strings to vibrate
  - d. with sticks which causes metal plates to vibrate
  - e. none of the above

36. In Episode 25 of *Galaxy Angel X*, Chitose Karasuma prepares lethal buns with poison that probably kills by \_\_\_\_\_.
- a. creating pores in the membrane of the intestinal wall
  - b. disrupting the nervous system, including involuntary muscle control
  - c. destroying blood cells and disrupting blood clotting
  - d. causing tissue damage to the heart
  - e. causing extreme photosensitivity, leading to burns in the presence of light
37. In Episode 7 of *Mythical Detective Loki Ragnarok*, Freya attempts to stab the title character while he is looking at a display of the \_\_\_\_\_ Period.
- a. Silurian
  - b. Devonian
  - c. Carboniferous
  - d. Permian
  - e. Triassic
38. Anthy Himemiya serves jam and later makes shaved ice in Episode 32 of *Revolutionary Girl Utena*, in front of a picture of an astronomical object that is most near constellation \_\_\_\_\_.
- a. Leo
  - b. Scorpius
  - c. Aquarius
  - d. Taurus
  - e. none of the above because the image is fictional
39. Which of the following is the lowest speed that Twinkle Banks, from Episode 18 of *Speed Racer*, can drive her car within a vertical cylinder with a 100 feet diameter? Ms. Banks and her vehicle weigh 2800 pounds and the coefficients of friction ( $f$ ) for each speed are given.
- a. 25 mph,  $f = 0.67$
  - b. 35 mph,  $f = 0.67$
  - c. 45 mph,  $f = 0.64$
  - d. 55 mph,  $f = 0.60$
  - e. 65 mph,  $f = 0.55$
40. What is most nearly the angle between two adjacent faces of Sachi's gift box from Episode 3 of *Sword Art Online*? (Note: it is a regular polyhedron.)
- a. 55 degrees
  - b. 60 degrees
  - c. 71 degrees
  - d. 90 degrees
  - e. 109 degrees

41. In the dubbed version of *Romeo X Juliet*, three young women swoon on a bridge over Francisco in Episode 6. The one in the blue skirt speaks in a manner that \_\_\_\_\_ should have spoken in the Season 1 OVA of *Black Butler*.
- a. Agni
  - b. Ciel Phantomhive
  - c. Grell Sutcliff
  - d. Undertaker
  - e. none of the above
42. Consider the following two pieces of wedding music from *Ranma ½*: (A) when Picolette Chardin II imagines himself married to Ranma Saotome late in Episode 105 and (B) when Ranma Saotome dreams of her wedding to Picolette Chardin II early in Episode 106. Which would Baron Von Wolff of *First Squad, Moment of Truth* choose for his wedding?
- a. A is acceptable but not B.
  - b. B is acceptable but not A
  - c. Both A and B are equally acceptable and may both be selected.
  - d. Either A or B may be chosen but not both.
  - e. Neither A nor B are acceptable.
43. From Episode 24 of Season 2 of *K-On*, Yui Hirasawa drones a tune while presenting a gift to Sawako Yamanaka. If she sang the lyrics, they would have included "\_\_\_\_\_."
- a. Rejoice greatly, O daughter of Zion: shout o daughter!
  - b. Let the bright seraphim in burning row, their loud, uplifted angel trumpets blow.
  - c. Where'er you walk; cool gales shall fan the glade
  - d. O glorious prince, thrice happy they. Born to enjoy thy future sway!
  - e. See the godlike youth advance! Breathe the flutes and lead the dance!
44. Shiseikan Wind Ensemble plays music from Verdi's *Aida* in Episodes 4 and 5 of *La Corda d'Oro Blue Sky*. Which character does this music honor?
- a. Aida
  - b. Amneris
  - c. Amonasro
  - d. Radames
  - e. Ramfis
45. When Michiko Malandro hallucinates in the latter half of Episode 12 of *Michiko & Hatchin*, the moon above the pyramid is of \_\_\_\_\_ origin.
- a. Brazilian
  - b. British
  - c. French
  - d. Japanese
  - e. Spanish

46. The Aogiri family from *Ceres, Celestial Legend* are known for their dancing. From Episode 4, Yuhi expresses a greater interest in cooking. He most likely knows the nuances of \_\_\_\_\_ cuisine.
- a. Chinese
  - b. French
  - c. Indian
  - d. Italian
  - e. Japanese
47. Which high school from *Girls und Panzer* would most likely adopt into their formation the armored fighting vehicles used by General White's forces in Episode 35, of *Dragon Ball*?
- a. Anzio
  - b. Kuromorimine
  - c. Pravda
  - d. St. Gloriana
  - e. Saunders
48. After meeting the other girls on top of a moving train in the movie *Puella Magi Madoka Magica, Rebellion*, Mami Tomoe through a series of figure skating moves, ends with one named after a (an) \_\_\_\_\_ skater.
- a. American
  - b. Austrian
  - c. Norwegian
  - d. Russian
  - e. Swiss
49. Toden from Episode 10 of *Sailor Moon S* was created from a \_\_\_\_\_ train.
- a. commuter rail
  - b. freight
  - c. heavy rail
  - d. high-speed rail
  - e. light rail
50. In Episode 5 of *Strike Witches*, Charlotte Yeager sets a new speed record with engines manufactured by \_\_\_\_\_.
- a. Allison
  - b. Curtiss-Wright
  - c. Lycoming
  - d. Packard
  - e. Pratt & Whitney



*Study all things.*

*With all things being studied, knowledge will be complete.*

*With knowledge being complete, there will be sincerity of thought.*

*With sincerity of thought, there will be purity of the heart.*

*With purity of the heart, there will be beauty in the character.*

*With beauty in the character, there will be harmony at home.*

*With harmony at home, there will be order in the nation.*

*With order in the nation, there will be peace on earth.*

*The Great Learning*